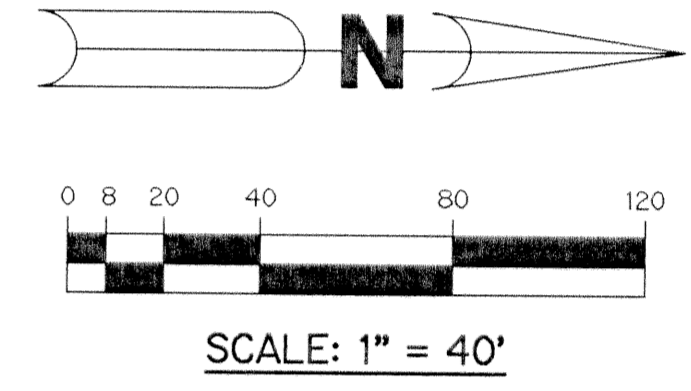
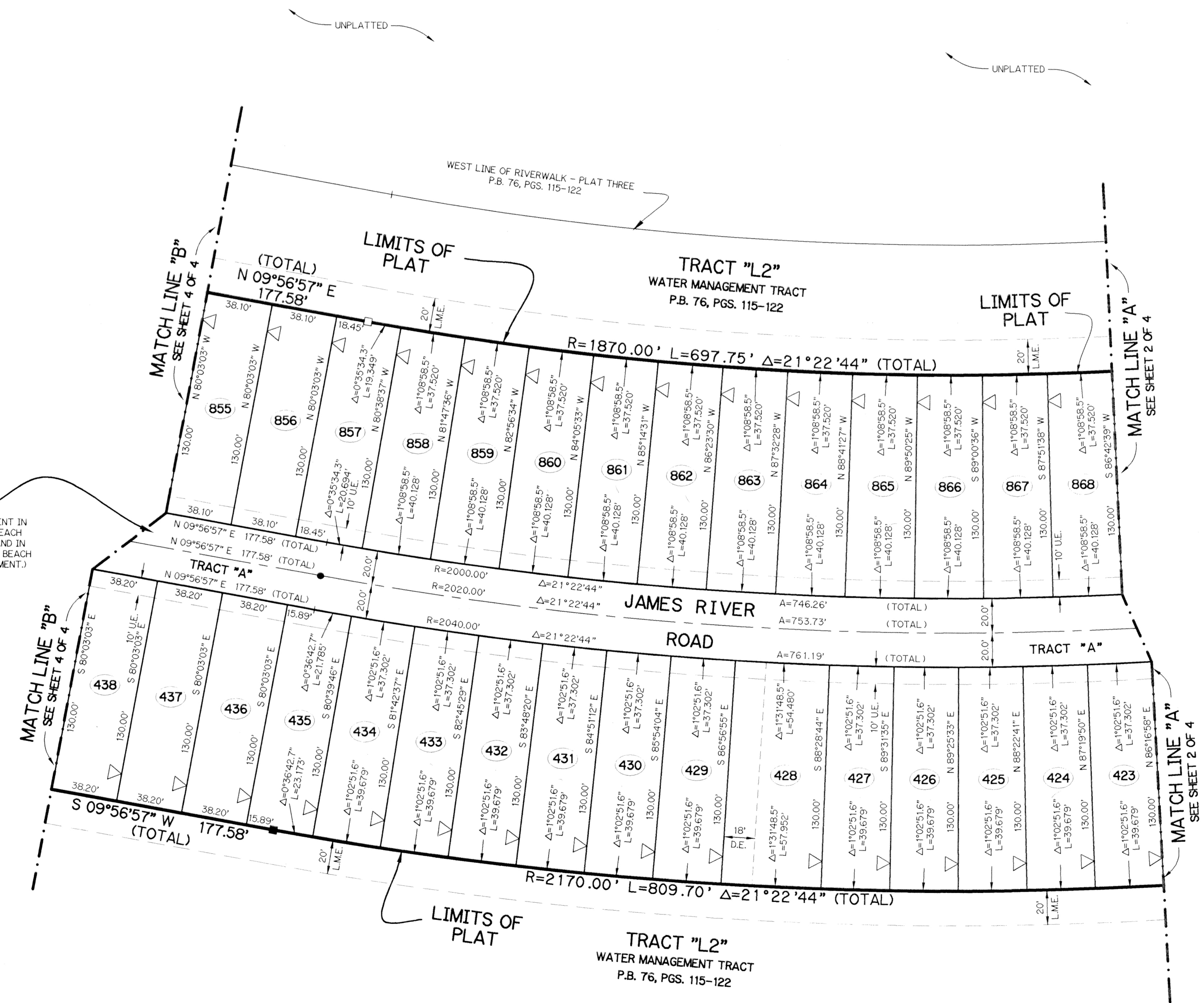
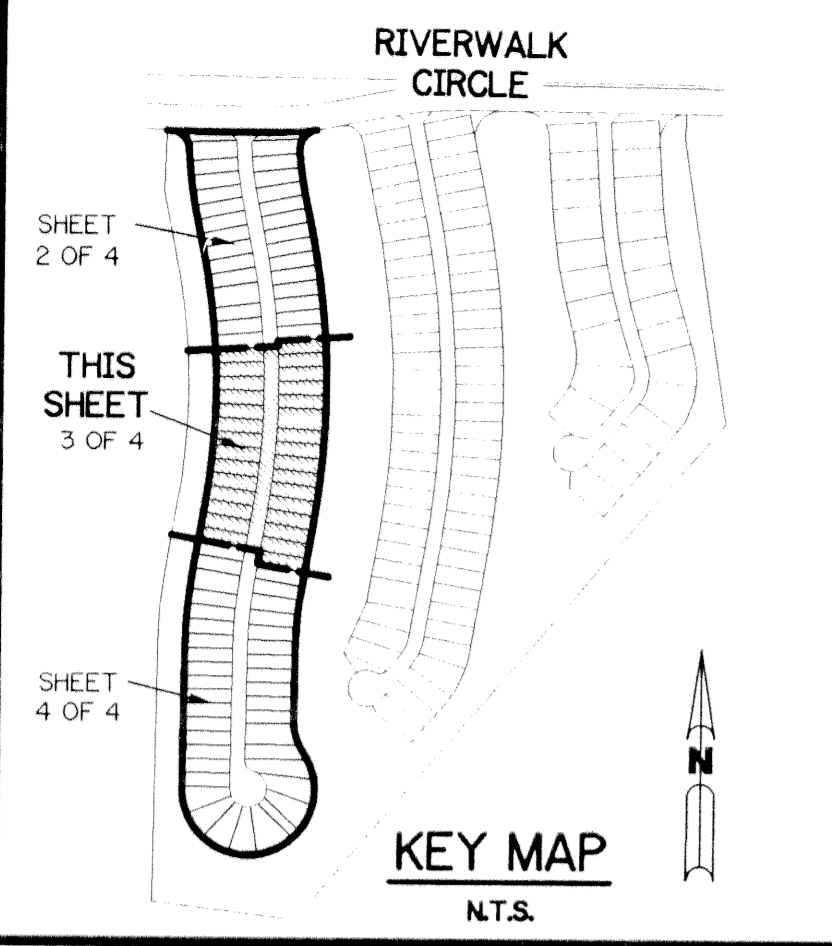


RIVERWALK - PLAT THREE - A

A REPLAT OF A PORTION OF RIVERWALK - PLAT THREE AS RECORDED IN PLAT BOOK 76, PAGES 115-122, PALM BEACH COUNTY, FLORIDA, AND LYING IN SECTION 21, TOWNSHIP 43 SOUTH, RANGE 42 EAST, CITY OF WEST PALM BEACH, PALM BEACH COUNTY, FLORIDA

SHEET 3 OF 4 JANUARY, 1997



- LEGEND:**
- - FOUND PERMANENT REFERENCE MONUMENT, PLS #4190
 - - SET PERMANENT REFERENCE MONUMENT, PLS #4213
 - - FOUND PERMANENT CONTROL POINT, PLS #4190
 - - PERMANENT CONTROL POINT, PLS #4213
 - - - - DELTA ANGLE
 - - - - ARC LENGTH
 - B.E. - BUFFER EASEMENT
 - D.E. - DRAINAGE EASEMENT
 - L.M.E. - LAKE MAINTENANCE EASEMENT
 - N.R. - NOT RADIAL
 - N.T.S. - NOT TO SCALE
 - P.B. - PLAT BOOK
 - PGS. - PAGES
 - P.L.S. - PROFESSIONAL LAND SURVEYOR
 - R - RADIUS
 - RE - RIVERWALK EASEMENT
 - S.T. - SURVEY TIE
 - U.E. - UTILITY EASEMENT
 - △ - INDICATES ZERO LOT LINE

THIS INSTRUMENT PREPARED BY
PERRY C. WHITE, P.L.S. 4213 STATE OF FLORIDA
LAWSON, NOBLE AND WEBB, INC.
ENGINEERS, PLANNERS SURVEYORS
WEST PALM BEACH, FLORIDA

SUBDIVISION - RIVERWALK
BOOK - 76
PAGE - 146
FLOOD MAP # -
QUAD -
SE -
ZIP CODE -
CITY OF WEST PALM BEACH

742 870